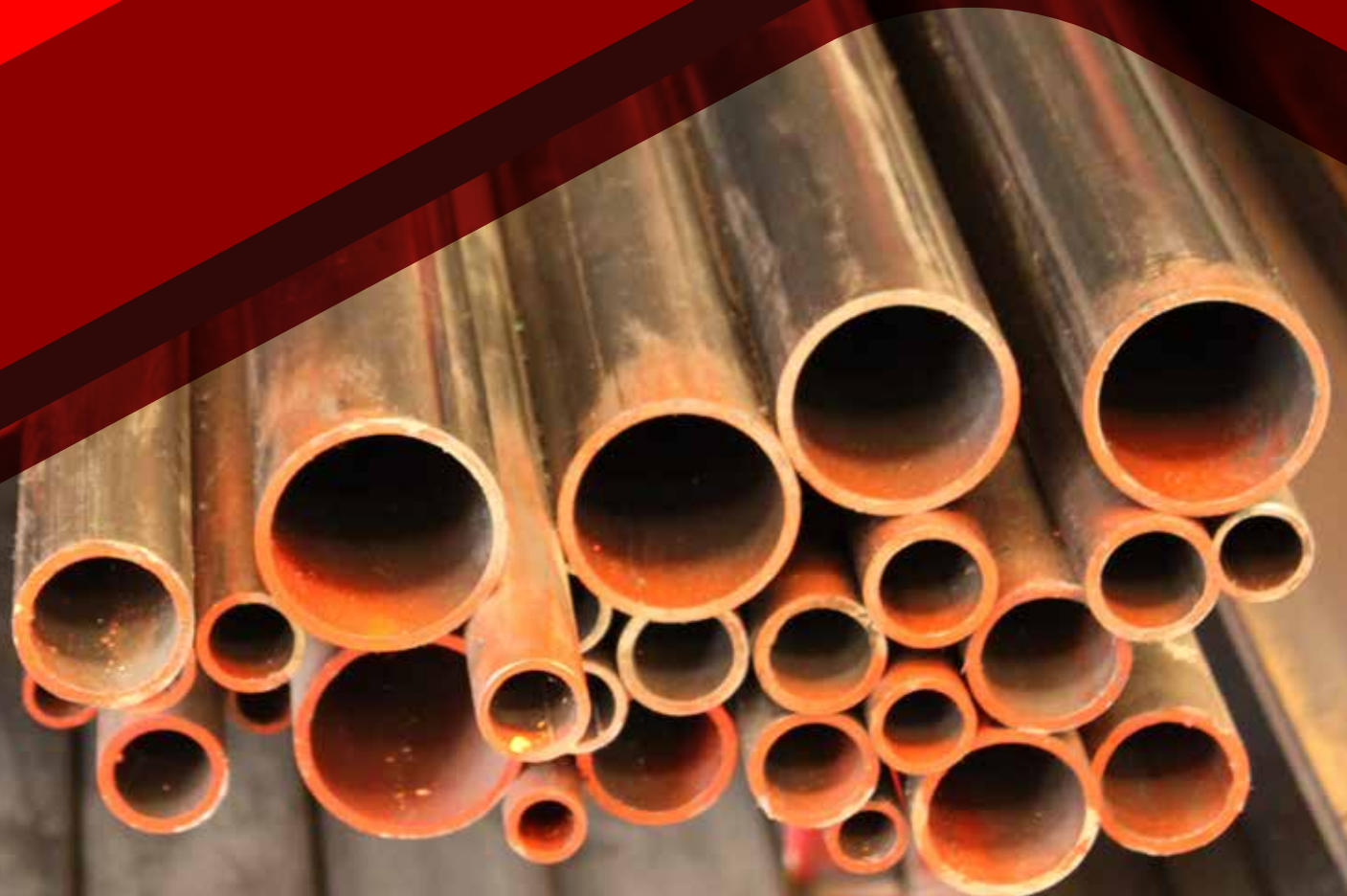


# TUBO CÉDULA 40





## Tubo Cédula 40

Tramos de 6.4 m

<b>Diámetro nominal</b> <i>pulgadas</i>	<b>Diámetro</b> <i>milímetros</i>	<b>Diámetro</b> <i>exterior mm</i>	<b>Espesor</b> <i>milímetros</i>	<b>Peso aprox</b> <i>kg/pza</i>
1/2"	12.7	21.3	2.77	8.13
3/4"	19.1	26.7	2.87	10.82
1"	25.4	33.4	3.38	16.00
1 1/4"	31.8	42.2	3.56	21.70
1 1/2"	38.1	48.3	3.68	25.92
2"	50.8	60.3	3.91	34.82
2 1/2"	63.5	73.0	5.16	55.23
3"	76.2	88.9	5.49	72.26
4"	101.6	114.3	6.08	102.85